



CLIENT: Florida State University
600 W College Ave
Tallahassee, FL 32306

DATE: February 22, 2022

JOB LOCATION: Sandels Building
675 W Call St
Tallahassee, FL 32304

MEASUREMENT SPECIALIST: Jessica Bell, DOH: FLR2724, NRPP: 111508-RT
MEASUREMENT LABORATORY: Radon Professional Services, NRPP 10194 AL
INTEGRATION PERIOD: One Hour
MEASUREMENT DEVICE: Sun Nuclear Professional Model 1027, Continuous Radon Gas
TEST PERIOD: February 15, 2022 – February 17, 2022

Device Number	Floor	Location	Results (pCi/L)
41514079	Basement	004D	6.1
1407075	1	115	1.7

SUMMARY & RECOMMENDATIONS

Radon testing was performed with continuous radon monitors for (2) locations at the Sandel Building on Florida State University Main Campus in Tallahassee, FL. All tests were placed by a certified state and NRPP radon professional. The location in the basement of the building tested above the EPA action level of 4.0 pCi/L. It is recommended that a radon mitigation system be installed in the basement to lower the radon levels to below the EPA action level.

Jessica Bell, Radon Measurement Specialist

NRPP Listed Radon Measurement Specialist (111508-RT)
NRPP Multi-Family Measurement
Florida Measurement Specialist (R2724)
Member American Association of Radon Scientist and Technologies

Professional
Radon Monitor

Start Date : 02/15/2022
Start Time : 11:00 am
End Date : 02/17/2022
End Time : 11:00 am
Serial # : 41514079
Location : Basement Level Room 004D

Signature: *ABW*

Data in pCi/l
Time Interval 1 Hr

4.0	2.6	9.0
7.6	5.0	5.3
7.3	4.6	5.6
4.3	5.3	7.3
5.6	5.3	8.6
4.3	9.6	8.0
4.0	5.3	3.6
5.0	6.3	5.6
5.6	4.3	5.0
8.6	9.3	6.6
6.3	10.0	5.6
9.0	7.6	5.6
7.0	5.6	5.3
4.6	3.6	7.6
4.6	6.3	4.6
8.0	6.6	5.6

Overall Avg.= 6.1
EPA Protocol Avg.= 6.1

Professional
Radon Monitor

Start Date : 02/15/2022
Start Time : 11:00 am
End Date : 02/17/2022
End Time : 11:00 am
Serial # : 1407075
Location : 1st Floor Room 115

Signature: *JBW*

Data in pCi/l
Time Interval 1 Hr

1.0	1.0	1.4
2.9	1.8	2.1
2.9	2.1	2.5
1.4	2.5	1.8
1.4	0.3	0.7
1.0	3.6	1.4
1.4	2.9	2.1
1.0	3.2	0.7
3.2	2.9	2.1
1.4	1.0	2.1
1.8	2.1	0.3
0.0	1.0	2.1
1.8	1.0	1.0
2.1	2.1	1.8
1.0	1.4	2.1
1.0	1.0	1.4

Overall Avg.= 1.7
EPA Protocol Avg.= 1.7



CLIENT: Florida State University
600 W College Ave
Tallahassee, FL 32306

DATE: February 22, 2022

JOB LOCATION: Sandels Building
675 W Call St
Tallahassee, FL 32304

MEASUREMENT SPECIALIST: Jessica Bell, DOH: FLR2724, NRPP: 111508-RT
MEASUREMENT LABORATORY: Radon Professional Services, NRPP 10194 AL
INTEGRATION PERIOD: One Hour
MEASUREMENT DEVICE: Radon Eye Pro RD2009
TEST PERIOD: February 15, 2022 – February 17, 2022

Device Number	Floor	Location	Results (pCi/L)
RP2190850029	2	207E	0.7
RP21908050094	2	Suite 242	1.4

SUMMARY & RECOMMENDATIONS

Radon testing was performed with continuous radon monitors for (2) locations on the second floor of the Sandels Building on Florida State University Main Campus in Tallahassee, FL. All tests were placed by a certified state and NRPP radon professional. The (2) measurements are below the EPA action level of 4.0 pCi/L. No additional testing is required at this time.

Jessica Bell, Radon Measurement Specialist

NRPP Listed Radon Measurement Specialist (111508-RT)
NRPP Multi-Family Measurement
Florida Measurement Specialist (R2724)
Member American Association of Radon Scientist and Technologies

RADON INSPECTION REPORT

Document Generated

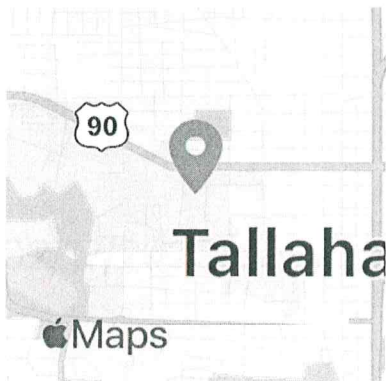
02 / 22 / 2022

Document Number

RP21908050029_15Feb22_1105

Test Performed For

Florida State University Sandels Building



Device S/N

RP21908050029

Measurement Date

02/15/2022 - 02/17/2022

Inspection Duration

48 Hour (Data No: 48)

Measurement Location

**675 W Call St
Tallahassee, Florida 32304**

Inspector

Radon Professional Service

Inspector Phone

Inspector Address

Test Started
02/15/2022 11:07

Test Ended
02/17/2022 11:08

Inspection Duration
48 Hours

Calibrated
07/22/2019 11:56

Wait Time
0 Hours

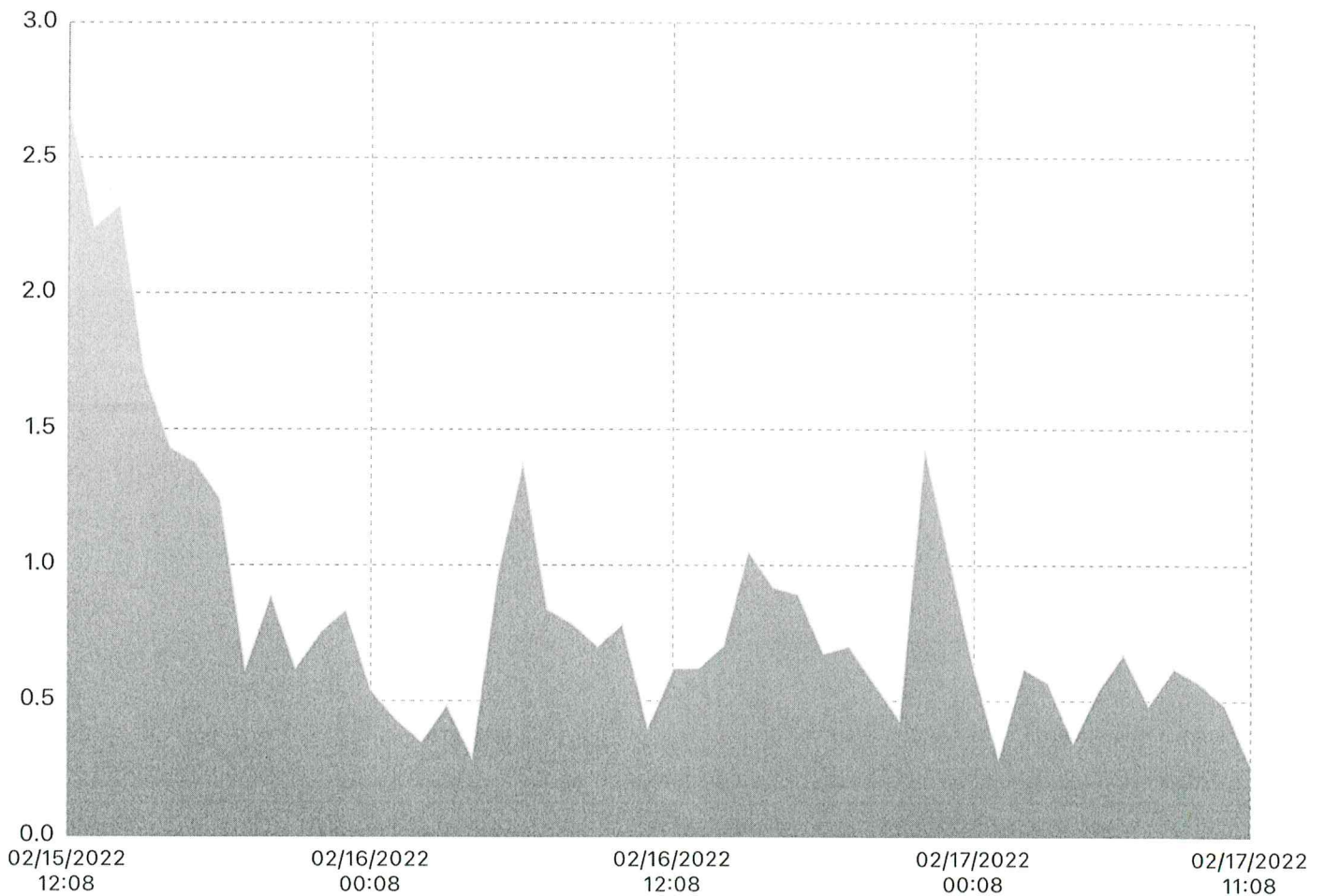
Radon Concentration Max
2.7

Radon Concentration Min
0.3

Overall Avg
0.8

EPA Protocol Average
0.7

NOTE: The calibrated EPA average excludes the first 4 measures to follow EPA Protocol



COMMENTS

Device was placed in 207E on the 2nd floor

Table of Hourly Radon Measurements

Radon Concentration Average: 0.8 pCi/L

Timestamp	Radon Value	Temp(F)	RH(%)	Timestamp	Radon Value	Temp(F)	RH(%)
02/15/22 12:08	2.7	70	32	02/16/22 12:08	0.6	73	35
02/15/22 13:08	2.2	72	30	02/16/22 13:08	0.6	74	35
02/15/22 14:08	2.3	72	29	02/16/22 14:08	0.7	74	35
02/15/22 15:08	1.7	72	29	02/16/22 15:08	1.1	74	35
02/15/22 16:08	1.4	72	29	02/16/22 16:08	0.9	73	36
02/15/22 17:08	1.4	72	29	02/16/22 17:08	0.9	73	36
02/15/22 18:08	1.2	72	30	02/16/22 18:08	0.7	72	36
02/15/22 19:08	0.6	71	30	02/16/22 19:08	0.7	72	37
02/15/22 20:08	0.9	71	30	02/16/22 20:08	0.6	72	37
02/15/22 21:08	0.6	70	31	02/16/22 21:08	0.4	72	38
02/15/22 22:08	0.8	70	31	02/16/22 22:08	1.4	72	38
02/15/22 23:08	0.8	70	31	02/16/22 23:08	1.0	72	39
02/16/22 00:08	0.5	70	31	02/17/22 00:08	0.6	72	39
02/16/22 01:08	0.4	70	31	02/17/22 01:08	0.3	72	39
02/16/22 02:08	0.4	70	32	02/17/22 02:08	0.6	72	39
02/16/22 03:08	0.5	70	32	02/17/22 03:08	0.6	72	39
02/16/22 04:08	0.3	70	32	02/17/22 04:08	0.4	72	39
02/16/22 05:08	1.0	69	33	02/17/22 05:08	0.5	72	42
02/16/22 06:08	1.4	69	34	02/17/22 06:08	0.7	71	43
02/16/22 07:08	0.8	69	34	02/17/22 07:08	0.5	71	44
02/16/22 08:08	0.8	68	35	02/17/22 08:08	0.6	71	44
02/16/22 09:08	0.7	69	35	02/17/22 09:08	0.6	71	44
02/16/22 10:08	0.8	70	36	02/17/22 10:08	0.5	72	45
02/16/22 11:08	0.4	72	36	02/17/22 11:08	0.3	71	46

* Temperature and humidity can vary depending on environmental conditions.

RADON INSPECTION REPORT

Document Generated

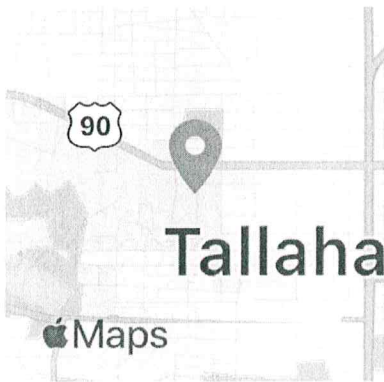
02 / 22 / 2022

Document Number

RP21908050094_15Feb22_1112

Test Performed For

Florida State University Sandels Building



Device S/N

RP21908050094

Measurement Date

02/15/2022 - 02/17/2022

Inspection Duration

48 Hour (Data No: 48)

Measurement Location

**675 W Call St
Tallahassee, Florida 32304**

Inspector

Radon Professional Service

Inspector Phone

Inspector Address

,

Test Started
02/15/2022 11:12

Test Ended
02/17/2022 11:14

Inspection Duration
48 Hours

Calibrated
07/22/2019 14:39

Wait Time
0 Hours

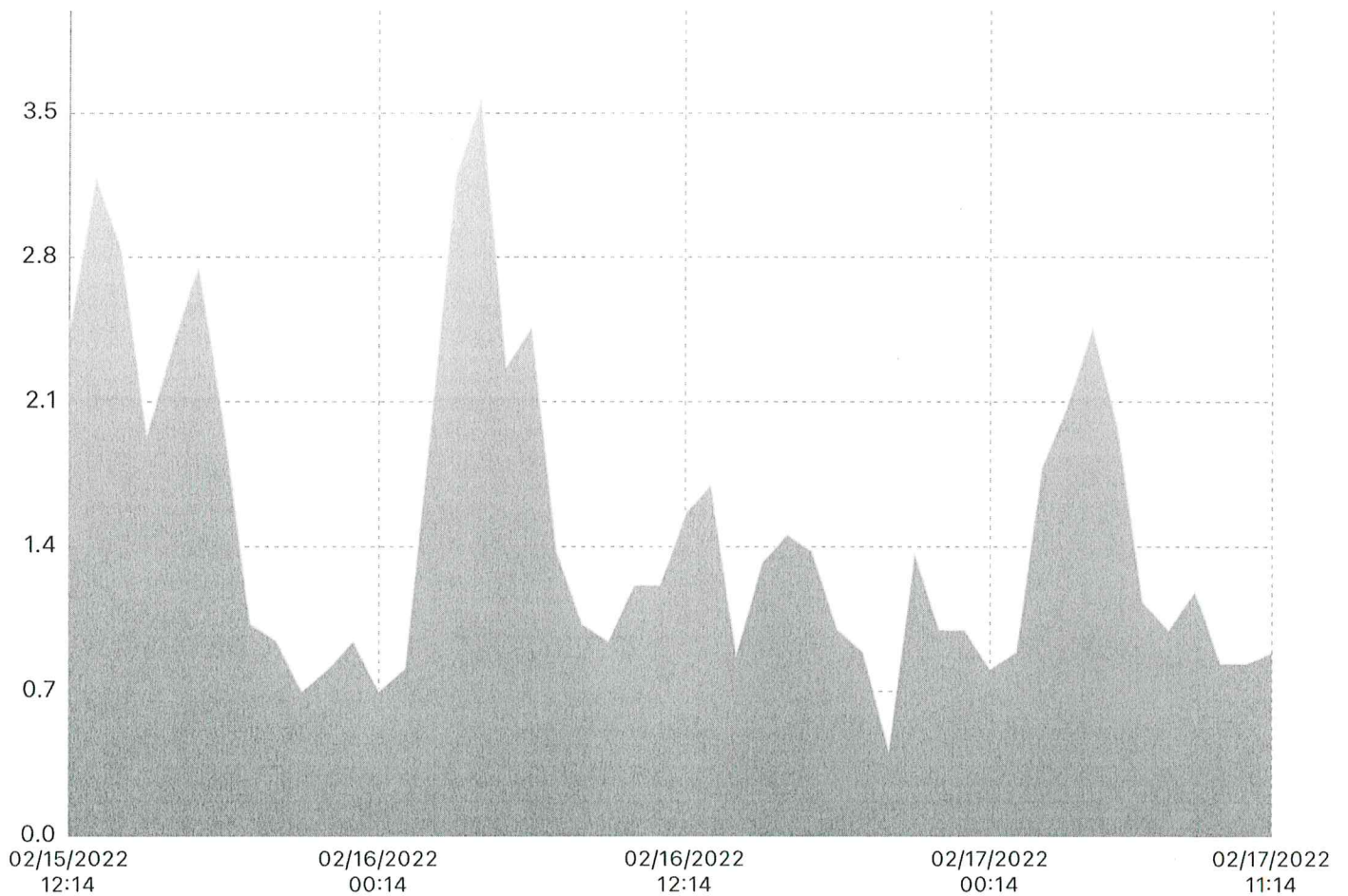
Radon Concentration Max
3.6

Radon Concentration Min
0.4

Overall Avg
1.5

EPA Protocol Average
1.4

NOTE: The calibrated EPA average excludes the first 4 measures to follow EPA Protocol



COMMENTS

Device was placed in Suite 242 on the 2nd floor

Table of Hourly Radon Measurements

Radon Concentration Average: 1.5 pCi/L

Timestamp	Radon Value	Temp(F)	RH(%)	Timestamp	Radon Value	Temp(F)	RH(%)
02/15/22 12:14	2.5	72	30	02/16/22 12:14	1.6	72	35
02/15/22 13:14	3.2	72	28	02/16/22 13:14	1.7	72	36
02/15/22 14:14	2.8	72	27	02/16/22 14:14	0.9	72	36
02/15/22 15:14	1.9	72	27	02/16/22 15:14	1.3	72	36
02/15/22 16:14	2.4	72	28	02/16/22 16:14	1.5	71	36
02/15/22 17:14	2.8	72	28	02/16/22 17:14	1.4	71	37
02/15/22 18:14	2.0	71	28	02/16/22 18:14	1.0	71	37
02/15/22 19:14	1.0	72	28	02/16/22 19:14	0.9	71	37
02/15/22 20:14	0.9	72	29	02/16/22 20:14	0.4	71	37
02/15/22 21:14	0.7	72	29	02/16/22 21:14	1.4	71	38
02/15/22 22:14	0.8	72	29	02/16/22 22:14	1.0	71	38
02/15/22 23:14	0.9	72	29	02/16/22 23:14	1.0	72	38
02/16/22 00:14	0.7	72	29	02/17/22 00:14	0.8	72	39
02/16/22 01:14	0.8	72	29	02/17/22 01:14	0.9	72	39
02/16/22 02:14	2.0	71	30	02/17/22 02:14	1.8	72	40
02/16/22 03:14	3.2	71	30	02/17/22 03:14	2.1	72	41
02/16/22 04:14	3.6	71	30	02/17/22 04:14	2.5	72	41
02/16/22 05:14	2.3	71	31	02/17/22 05:14	2.0	71	42
02/16/22 06:14	2.5	72	31	02/17/22 06:14	1.1	71	43
02/16/22 07:14	1.4	72	31	02/17/22 07:14	1.0	72	43
02/16/22 08:14	1.0	72	32	02/17/22 08:14	1.2	72	43
02/16/22 09:14	0.9	72	32	02/17/22 09:14	0.8	72	44
02/16/22 10:14	1.2	72	33	02/17/22 10:14	0.8	72	44
02/16/22 11:14	1.2	72	34	02/17/22 11:14	0.9	72	45

* Temperature and humidity can vary depending on environmental conditions.



CLIENT: Florida State University
600 W College Ave
Tallahassee, FL 32306

DATE: February 22, 2022

JOB LOCATION: Sandels Building
675 W Call St
Tallahassee, FL 32304

MEASUREMENT SPECIALIST: Jessica Bell, DOH: FLR2724, NRPP: 111508-RT

MEASUREMENT LABORATORY: Air Chek Labs, 1936 Butler Bridge Road
Mills River, NC 28759

MEASUREMENT DEVICE: Air Chek ProChek Activated Charcoal Short Term Radon Test

TEST PERIOD: February 15, 2022 – February 17, 2022

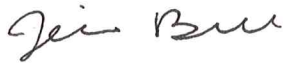
Device Number	Floor	Location	Results (pCi/L)
11078189	Basement	002	7.5
11078190	Basement	004	4.4
11103808	Basement	007	5.3
11103810	Basement	008	1.8
11103806/11103807	Basement	004C	6.8/6.3
11103805	Basement	004D	6.0
11103809	Basement	007A	5.3
11103811/11103812	1	105	1.7/1.7
11103814	1	108	1.9
11103813	1	100F	2.3
11103815	2	201	0.8
11103823	2	202	0.6
11103824	2	204	0.8
11103825	2	206	0.9
11103816	2	207	0.7
11103826	2	208	1.1
11103845	2	209	0.9
11103827	2	210	0.7
11103846	2	211	0.9
11103828	2	212	0.8
11103829/11103830	2	214	0.7/0.8
11103831	2	216	0.7
11103832	2	218	0.7
11103833	2	220	0.8
11103834	2	222	0.9

Device Number	Floor	Location	Results (pCi/L)
11103835	2	224	0.7
11103836	2	226	0.8
11103837	2	228	0.9
11103838	2	230	1.1
11103870/11103871	2	234	1.0/1.0
11103869	2	236	0.7
11103868	2	238	1.0
11103867	2	240	1.1
11103857	2	242	0.9
11103844	2	027N	0.8
11103822	2	207A	1.0
11103817/11103818	2	207C	0.8/0.9
11103819	2	207D	0.8
11103820	2	207E	0.8
11103821	2	207F	0.7
11103839	2	207J	1.1
11103840	2	207K	0.9
11103841	2	207L	1.0
11103842/11103843	2	207M	0.8/0.7
11103847	2	225B	0.8
11103852	2	225E	1.3
11103848	2	225F	1.0
11103849	2	225G	1.2
11103850/11103851	2	225H	1.0/0.9
11103853	2	240Q	0.9
11103865	2	242A	1.0
11103858	2	242D	1.1
11103859	2	242E	1.5
11103860	2	242F	1.3
11103864	2	242G	1.2
11103861	2	242I	1.3
11103862/11103863	2	242J	1.1/1.2
11103854	2	242M	1.4
11103855	2	242N	1.7
11103856	2	242O	0.9
11103866	2	242R	1.0
11103872	3	303	0.3
11103873	3	314	0.3
11103875	3	336	0.3
11103874	3	337	0.3
11103876	4	418	0.3
11103879	4	423	0.3
11103878	4	434	0.3

Device Number	Floor	Location	Results (pCi/L)
11103877	4	401B	0.3
11103880	4	442D	0.3
11103881	N/A	Quality Control	<0.3
11103882	N/A	Quality Control	<0.3
11103883	N/A	Quality Control	<0.3
11103884	N/A	Quality Control	<0.3

SUMMARY & RECOMMENDATIONS

Radon testing was performed for (70) locations at the Sandel Building on Florida State University Main Campus in Tallahassee, FL. All tests were placed by a certified state and NRPP radon professional. There were (6) locations in the basement of the building that were above the EPA action level of 4.0 pCi/L. It is recommended that a radon mitigation system be installed in the basement to lower the radon levels to below the EPA action level.



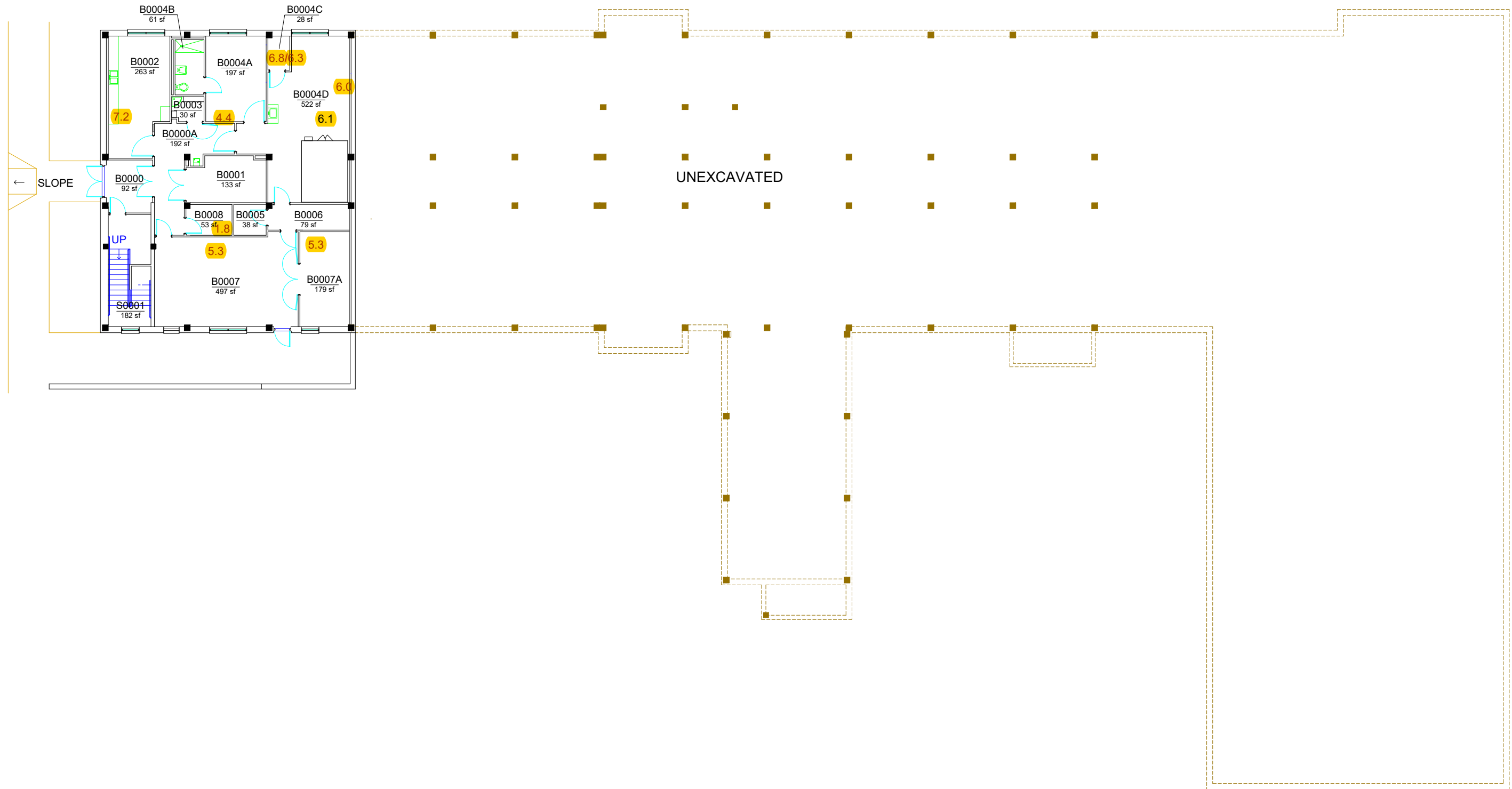
Jessica Bell, Radon Measurement Specialist

NRPP Listed Radon Measurement Specialist (111508-RT)

NRPP Multi-Family Measurement

Florida Measurement Specialist (R2724)

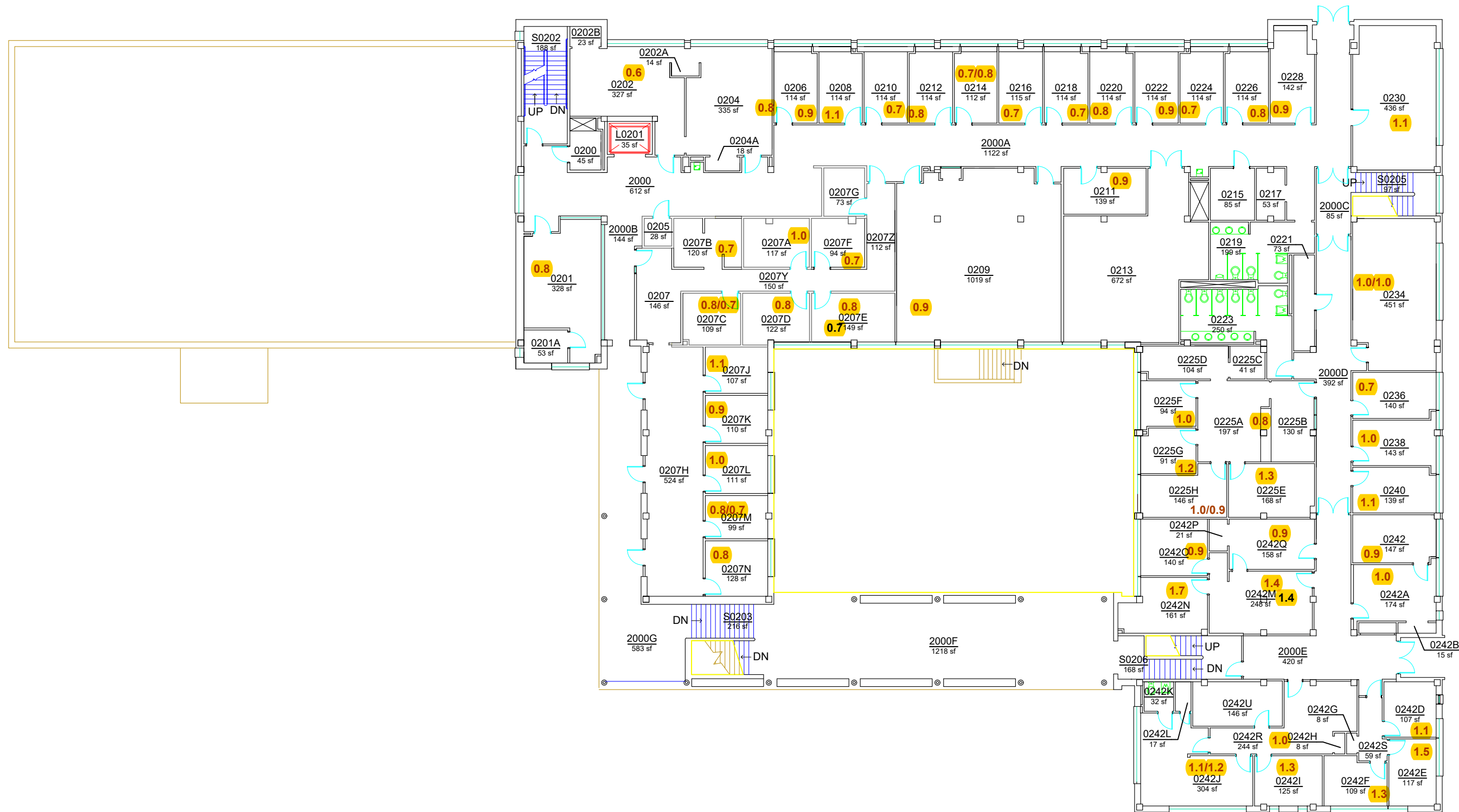
Member American Association of Radon Scientist and Technologies



BASE FLOOR PLAN

SANDELS BUILDING - SAN
BASEMENT





BASE FLOOR PLAN

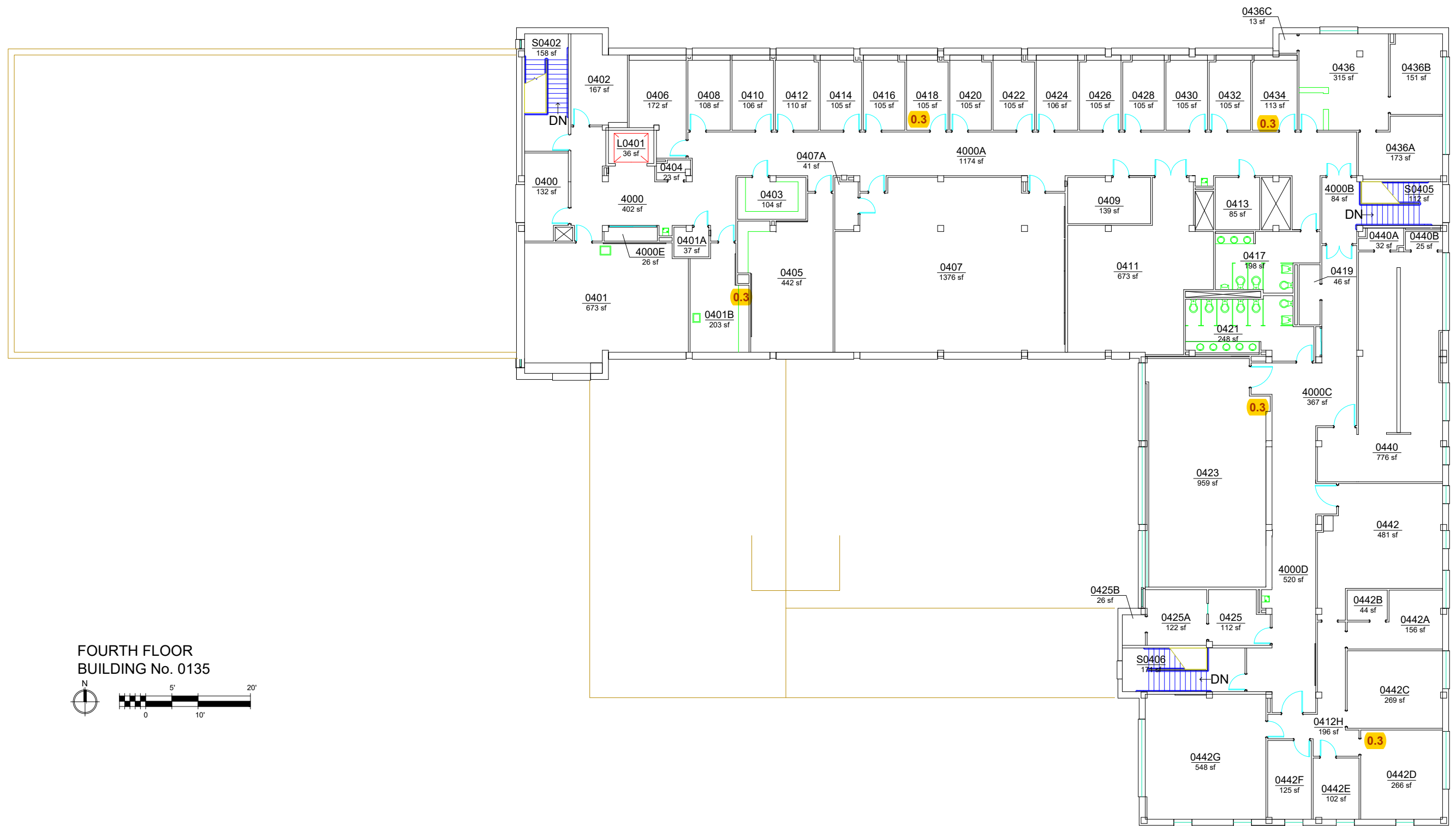
**SANDELS BUILDING - SAN
SECOND FLOOR**



FLORIDA STATE UNIVERSITY
FACILITIES PLANNING AND
SPACE MANAGEMENT
www.facilities.fsu.edu/psm

SITE: **MAIN CAMPUS**
BUILDING NO.: **0135**
LEVEL: **02**
LAST UPDATE: **01/05/2018**





FOURTH FLOOR
 BUILDING No. 0135

BASE FLOOR PLAN

**SANDELS BUILDING - SAN
FOURTH FLOOR**

